



You have reserved a CCSVI examination at a clinic in Düsseldorf, with which Privatescan exclusively works. By means of this information folder we will give you a short overview of the course of the day that your examination will take place on and which examinations you will undergo.

CCSVI - Chronic Cerebral Spinal Venous Insufficiency- is a syndrome, which causes constrictions (stenosis) and /or the malfunction of vein valves in the neck (jugular), the thorax (azygos), a free outflow of deoxygenated blood and dirty blood from the Central Nervous System (CNS) and affecting all parts of the body. This can cause a blood back flow or slow down the blood flow (reflux) in the blood vessels of the brain. This reflux can damage the natural protection against back flow, damage the “Blood Brain Barrier” and cause “dirty” blood to flow back into the Central Nervous System. With MS patients this causes, in accordance with Dr. Paolo Zamboni’s theory in 2008 – an auto-immunologic reaction, which is the cause of symptoms associated with multiple sclerosis (MS), such as chronic inflammation of the brain with permanent damage and progressively worse MS symptoms.

Privatescan traces CCSVI with the use of highly advanced means of examination, such as a 3.0 tesla MRI scanner, Ultrasonic Doppler duplex and super fast CT scanner. Privatescan works according to the protocols developed by Dr. Zamboni and Dr. Haacke. By means of a “Ballooning” procedure the CCSVI can be neutralized by Privatescan, which reduces the inflammatory processes in the brain, relapses decrease or even don’t occur anymore and typical MS symptoms decrease or even disappear. Usually these symptoms decrease some time after the treatment.

3.0 Tesla MRI scanner by General Electric Medical Systems (GE)



For the MRI venography Privatescan uses the protocol developed by Dr. Haacke elaborated on with protocols developed by Privatescan radiologists and General Electric making extremely accurate measurements of the vascular flow and differences in blood pressure in the vicinity of stenosis (narrowing of the veins) possible. These protocols are important because M.S. patients are often found to have stenosis, of which the extent and seriousness is insufficiently shown. Thanks to the 3.0 tesla magnetic field, very high resolution 3D images are made of the brain and blood vessels in the head, neck and thorax. The jugular and azygos veins. The examination takes about 30 minutes, whereby a contrast agent is administered by means of a drip. People suffering from claustrophobia can be given a sedative to help them undergo the examination without problems.

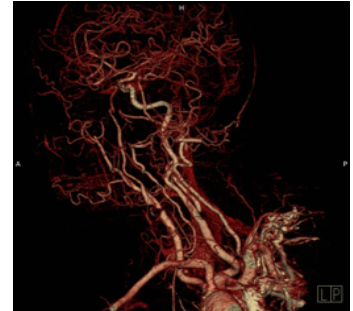
Echo / Doppler duplex by General Electric Medical Systems (GE)

The echo / doppler duplex examination is carried out in a sitting and fully reclined position according to the protocol developed by Dr. Paolo Zamboni. Thanks to 3D and 4D imaging, measurements can also be taken of the vascular flow and differences in blood pressure in the vicinity of stenosis. Here especially the measurements made in the sitting position can provide extra important information compared to the MRI venography, which can only be carried out in a lying position. Depending on where the stenosis is situated this technique has the disadvantage that anatomical structures might be in the way, not always making it possible to take an accurate measurement. This examination takes approximately 30 to 40 minutes. You can also watch the examination taking place on a screen.



Ultra fast CT scanner by General Electric Medical Systems (128 slice).

GE and Privatescan have developed new protocols, with which the shortcomings of the echo / doppler duplex are rectified. These protocols have been extensively tested in the laboratory. This examination will initially be carried out at no expense as a trial examination. The resulting data gained will then be compared to data from other echo / doppler duplex examinations. If the theory is confirmed in practice, then this examination will become a standard part of the CCSVI examination carried out by Privatescan. Once this data is known and analysed, it will be published on our website, so that other research institutions and scientists can make use of it. This examination takes approximately 20 minutes.



Take note: You should bring a current TSH (thyroid gland) value and Creatinine (kidneys) value with you to the clinic. These may not be older than two months. We need these values to make certain that you can tolerate the contrast agent used for the CT scan.

Side effects and risks:

At present there are no known side effects caused by MRI examinations. There are certain risks attached for some people. For example, a MRI scan cannot be carried out if there are metal pieces in your body. Consider small pieces of metal in the eye (people working in the metal industry), implanted hearing aids and metal vein clips. It is not possible to undergo a MRI scan if you have implanted electrical apparatus, such as a pacemaker or a subcutaneous (under the skin) insulin pump. Implants in the jaw/oral cavity generally do not cause problems (surgical steel). Other metal objects, such as piercings and hair extensions can be dangerous or cause damage to the apparatus. Orthopaedic prostheses, screws and plates cause interference, making the images less clear.

The clinic in Düsseldorf where the examinations and treatment are being carried out is equipped with hi-tech apparatus, wheel chair friendly and has modern and comfortably furnished waiting rooms where patients and their attendants can wait. On behalf of Privatescan there are English speaking attendants present during the examinations. After the examinations and once the doctor has evaluated the images made, you will have a second consultation with the examining doctor who will inform you and explain his/her findings to you with the help of a monitor. A DVD copy of all the images made will be given to you. The written report will be sent to you by post within 2 working weeks, this is in German. A Dutch / English translation will follow within 3 weeks after the date of the examination. Your stay in the clinic will be an estimated 5 hours.

Take note: You should preferably be wearing cotton clothing (no polyester) no metal buttons or zips may be attached to the clothing. During the examination no metal objects may be taken into the examination area. Any jewellery, hairpins, braces, bras etc. must be removed. For women: no make-up.

If you have any further questions we will gladly answer them, by telephone 074-2552680 or by email info@privatescan.nl You can also find more detailed information on our website: www.ccsvi-online.nl